

Benefit from the new generation of robotic dispensers





How to make your pharmacy more profitable with Consis E.



Consis E is the new heart and soul of your pharmacy.

Are you also facing the issue of how to prevent queues in your pharmacy, streamline procedures and enhance safety by preventing dispensing errors?

CONSIS.E

With Consis E your pharmacy is enhanced by a control centre that manages your medicine logistics and determines the heartbeat of your work processes.

All workflows, from stocking through storage to the dispensing of medicines, are perfectly coordinated and controlled by Consis E. It does so with such smoothness and speed that you are hardly aware of it. Except in the amount of time you have won, the huge number of routine tasks from which your team has been relieved and the increased satisfaction of your customers.





How you can keep all your processes under control with Consis E.

Devote more attention to providing your customers with qualified advice and save valuable time by reducing low value-added activities and time spent moving about. You decide which degree of automation is best for your pharmacy.

Consis E builds on the proven CONSYS channel technology supplemented by single storage spaces. This achieves the greatest possible storage density.

The deployment of two separately controlled robotic arms means that packages can be stocked and dispensed simultaneously. When there is a high level of customer traffic, the two robotic arms and short dispensing paths ensure fast service and satisfied customers.

1. Stocking



Semi-automated goods stocking facility:

Separated, manually filled stocking compartments mean that the system can cope with the differentiated treatment of packages such as sell-by-date maintenance for rarely requested products, the handling of returns and opened packages, and the stocking of round containers.



Fully automated goods stocking with the Consis Stockmaster:

The packages are simply tipped into the stocking funnel, then stock is recorded and placed fully automatically.

2. Storage



Robotic arm 1: Takes care of stocking all packages and dispenses rarely required medicines (slow movers) and opened packages from single storage spaces.



Robotic arm 2: Takes care of dispensing all fast moving products from the channel storage area. Ideal for highly frequented pharmacies.

3. Dispensing



Fully automated labelling with Consis Labelmaster: Guarantees error-free labelling of medicine packages with individually customised font, size and design.

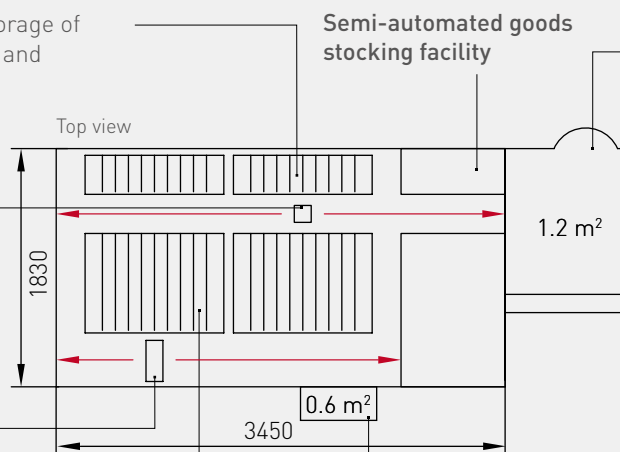


Dispensing to up to 8 dispensing points: Short dispensing paths and dispensing points above head height make elaborate conveyor equipment redundant. The required package is available for collection within seconds.

Single storage spaces: random storage of single packages (e.g. slow movers and opened packages)

Robotic arm 1: stocking of all articles as well as dispensing of packages from the single storage spaces

Robotic arm 2: primarily dispensing of articles from the stock channels (fast movers)



Semi-automated goods stocking facility

Fully automated goods stocking with the Consis Stockmaster (optional)

Footprint: from 6.3 m²

Capacity:

up to 19,620 packages

– up to 1,410 articles (16,920 packages) in the stock channels

– up to 2,700 articles (2,700 packages) in the single storage spaces

Stocking: up to 240 packages/hr.

Dispensing: up to 960 packages/hr.

Stock channels: storage of several packages, sorted by type

Fully automated labelling with the Consis Labelmaster (optional)



Consis E grows as your pharmacy grows.

Consis E is a modular application that can be customised for you. You decide how much automation you require, and Willach shows you what can be done.

Fully automated stocking with the Consis E Stockmaster

The Consis E Stockmaster is the patented module for the fully automated stocking of medicine packages. Simply tip the delivered goods into the Stockmaster and it will do the rest. The Consis E Stockmaster works 24/7 regardless of the opening hours of your pharmacy.



The Consis E Stockmaster is already prepared for the new scanning procedure to read data matrix codes* and can be retrofitted at any time.

Fully automated labelling with the Consis E Labelmaster

With the Consis E Labelmaster, Willach offers you fully automated labelling – effortless and efficient. Now you can use your valuable working time to advise your customers rather than having to label medicines.

A completely closed system from stocking to dispensing means that the Consis E Labelmaster can guarantee error-free labelling of packages. Human error is completely eliminated. That saves time and creates safety. Its modular system design and minimal space requirement of just 0.6 m² means that the Consis E Labelmaster can also be retrofitted at a future time.



*Data Matrix Code



With the two-dimensional data matrix code (2D code), information density can be clearly increased per surface area compared with the one-dimensional barcode. Its structure enables the storage of additional information such as e.g. sell-by date, country of origin and batch number. Medicines which will soon reach their sell-by date can thus be identified in good time and product forgeries can be recognised by the pharmacist. In the near future, all medicine packages in the EU will be labelled using the data matrix code. The first pharmaceutical companies have already started to do so.

How Consis E integrates perfectly into the architecture of your pharmacy.

Automation is an important step for your pharmacy. Consis E is the system which adapts precisely to your requirements in the minimum space.

Individual design – to match your fittings

Consis E fits optimally into the design of your pharmacy - not just in terms of space but also in appearance. As regards the colour of the cabinet, your options are a timeless signal white or a modern look in silver grey.



Steel



Stainless steel

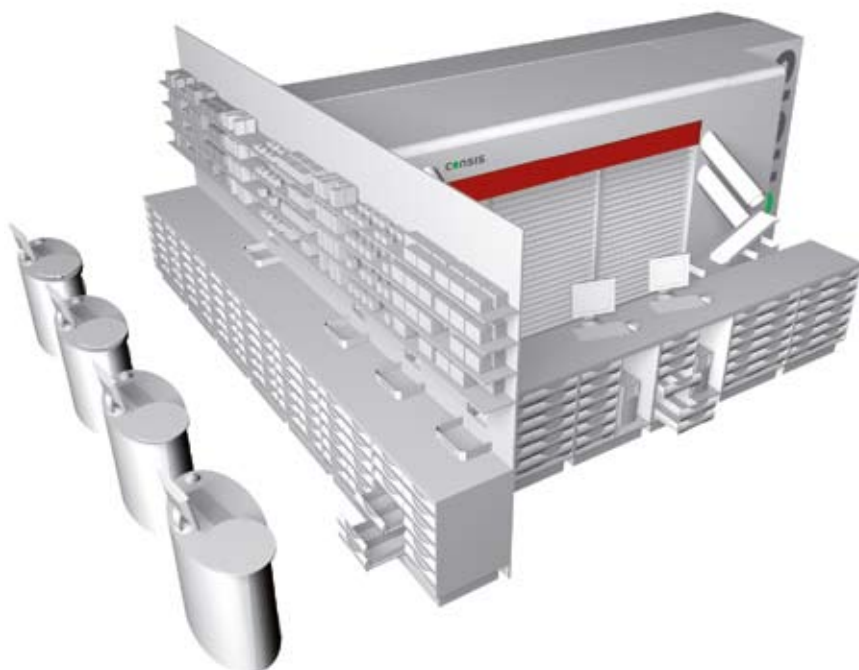


Wood

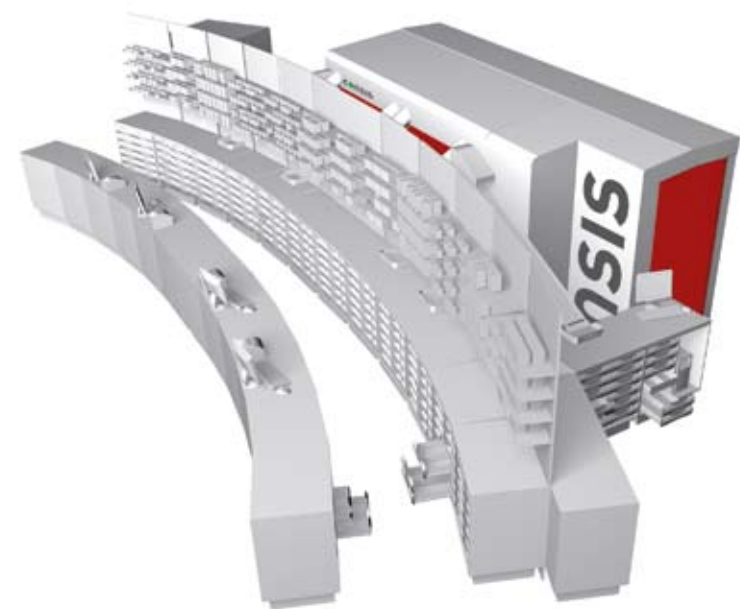
Front and side panels can be freely configured, with practically no restrictions, in terms of both colour and material. Your shop fitter will be able to advise you further.

The compact design of the Consis E with its small footprint allows the robotic dispenser to be positioned directly behind the OTC shelves. This ensures short dispensing paths and very fast dispensing of packages.

Dispensing points, also above head height, send the packages along simple gravity chutes directly to the correct counter or desk. Therefore the use of conveyor equipment and belts is often unnecessary thus saving time and money.



Consis E at 90° alignment behind the OTC shelves



Consis E at 0° alignment behind the OTC shelves



Consis E integrated into the OTC shelves at 0° alignment

Because **Consis E** considerably increases the efficiency of your work processes.

Completely automated storage system with separate storage spaces for fast and slow movers in a single module.



Simultaneous dispensing of several packages with the multi-pick function.

Because **Consis E** places the dispensing points precisely where the dispensing path is shortest.

Up to eight dispensing points – of which six can be above head height – can be placed without restriction and allow for short transport paths via simple chutes. This avoids the need for elaborate conveyor equipment.



Other possible dispensing points

Because **Consis E** is capable of fully automated labelling.

Equipped with the Consis E Labelmaster module, Consis E labels the medicines for you. This ensures greater safety and a considerable time saving.



CONSIS
labelmaster

Why Consis E is a significant success of your



Because **Consis E** works with 2 robotic arms.

The deployment of two robotic arms working in parallel allows for the simultaneous stocking and dispensing of goods.

Important factor in the future of your pharmacy.



Because **Consis E** integrates perfectly into your pharmacy design.

The Consis E is available in various one or two-colour combinations. The choice of colours and materials for the front and side panels is almost limitless.

Because **Consis E** automatically stocks medicines.

Simply tip the delivered goods into the Consis Stockmaster and it will do the rest.



CON SIS
stockmaster



Because **Consis E** is child's play to operate.

Consis E is equipped with a height-adjustable touch-screen monitor with integrated scanner. Its user-friendly software makes the Consis E simple and uncomplicated to operate.

Willach Pharmacy Solutions.

The right prescription for every pharmacy.

Willach is the market leader in Europe with regard to the professional storage and dispensing of medicines. With CONSYS and FAMA, Willach can provide system solutions for the conventional and fully automated storage of medicine packages. For each type of pharmacy. For each size of pharmacy.



FAMA drawer systems

Fama GX and MX drawers: providing access to packages in the shortest time, good visibility, greatest utilisation of space when stocking medicines and ergonomically perfect operation. No other system offers you drawers which can store more packages in the same space.



FAMA shelving systems

Fama worktop and fast mover shelves were developed as a modular system to achieve the greatest possible flexibility. They can be precisely adapted to your individual requirements and are particularly suited for hospital pharmacies.



FAMA round shelves

Fama round shelves are the ideal addition to the market leading Fama pharmacy drawer. For medicine packages which are frequently dispensed, the Fama round shelf provides direct access with short distances.



Willach Pharmacy Solutions GmbH
Stein 2
53809 Ruppichteroth
Germany
Tel. +49 (0) 2295 9208 0
Fax +49 (0) 2295 9208 499
info@willach.com
www.willach.com

Willach**Group**